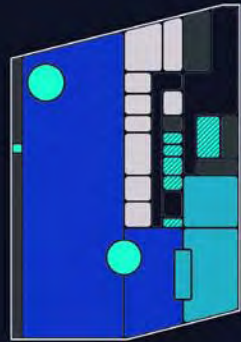
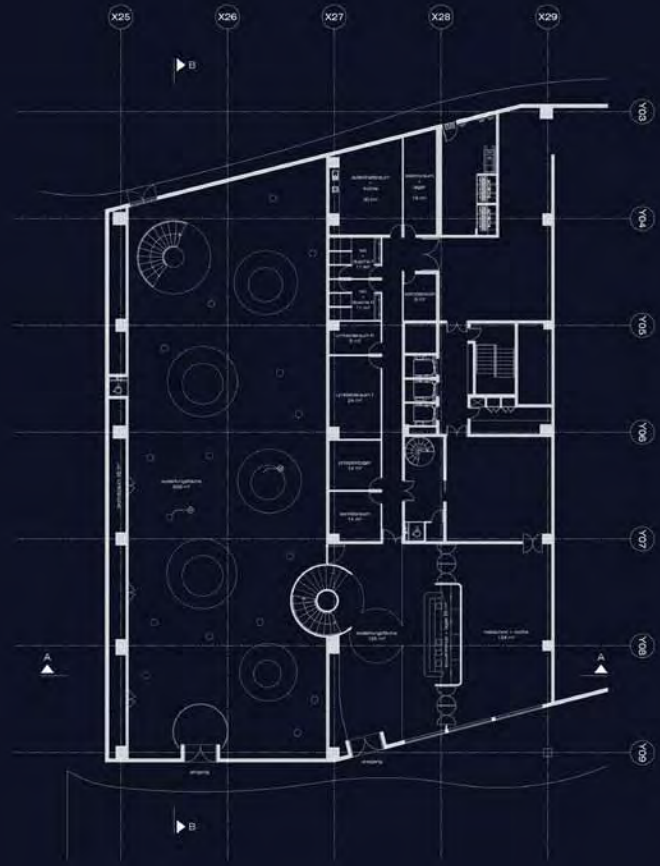


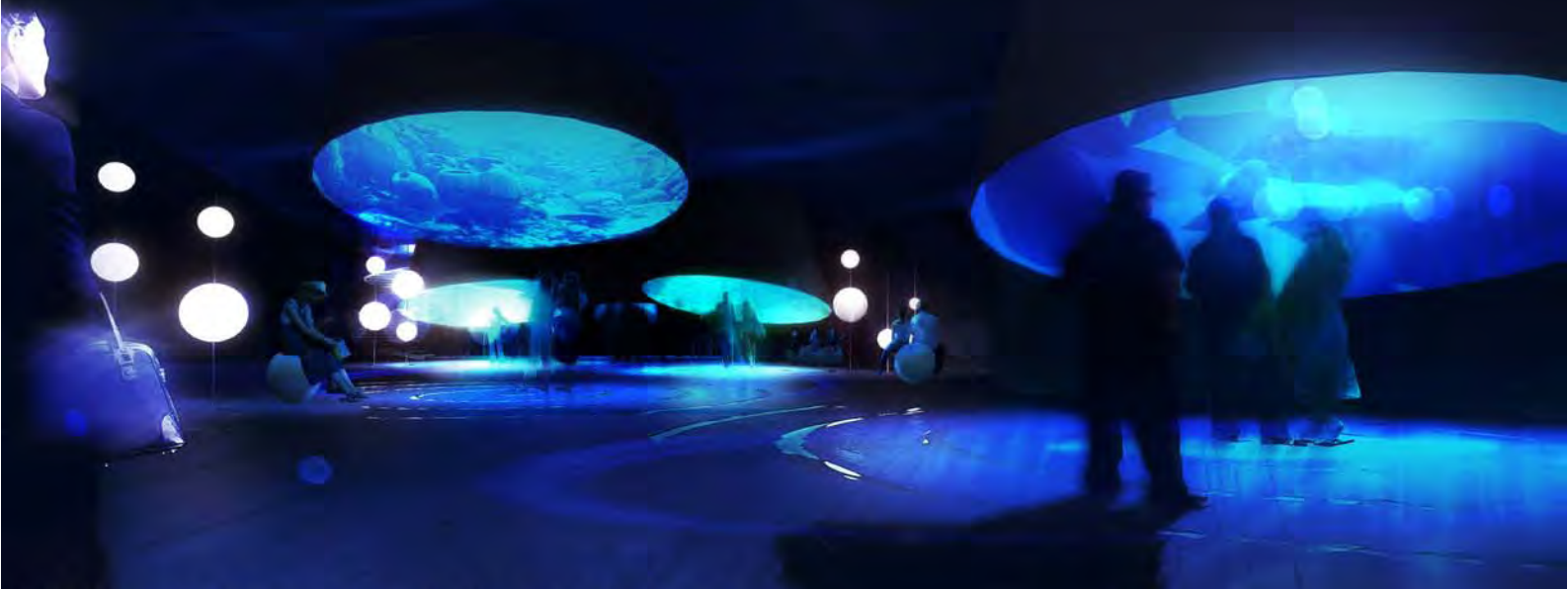
südfassade



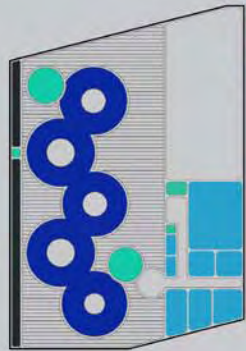
raumprogramm - erdgeschoss



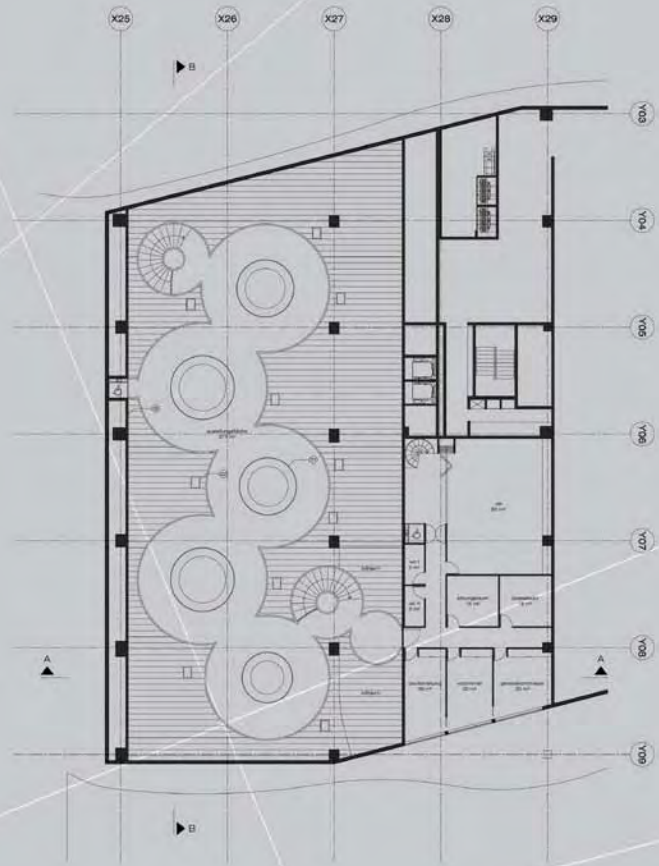
erdgeschoss 1/200
01 "wasserläden" - led bildschirme
02 "inermischer konus natur" - led projektorfläche



blick vom eingang auf die ausstellung



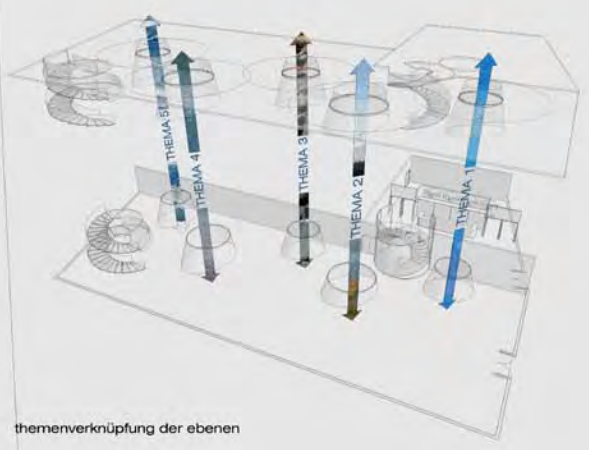
raumprogramm - zwischenebene



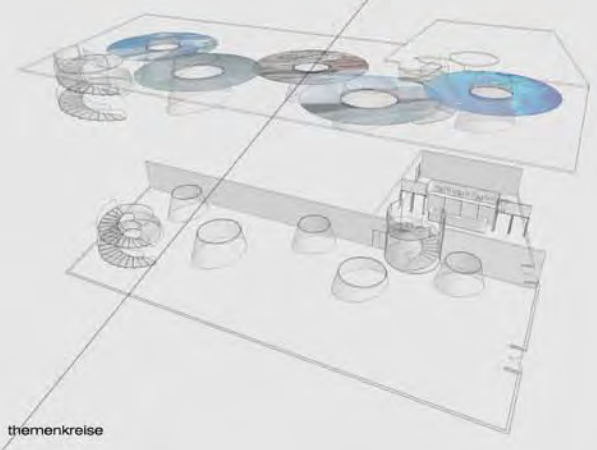
zwischenebene
01 "transferrichter boris kultur" - expositive
02 "wissensbereiche" - expositive
03 spiegelfläche



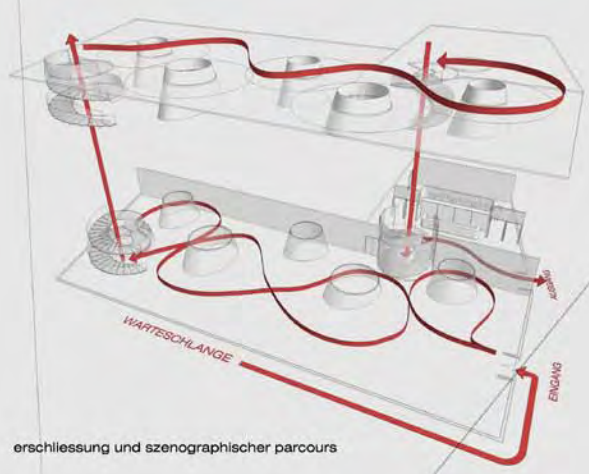
blick auf die ausstellung der zwischenebene



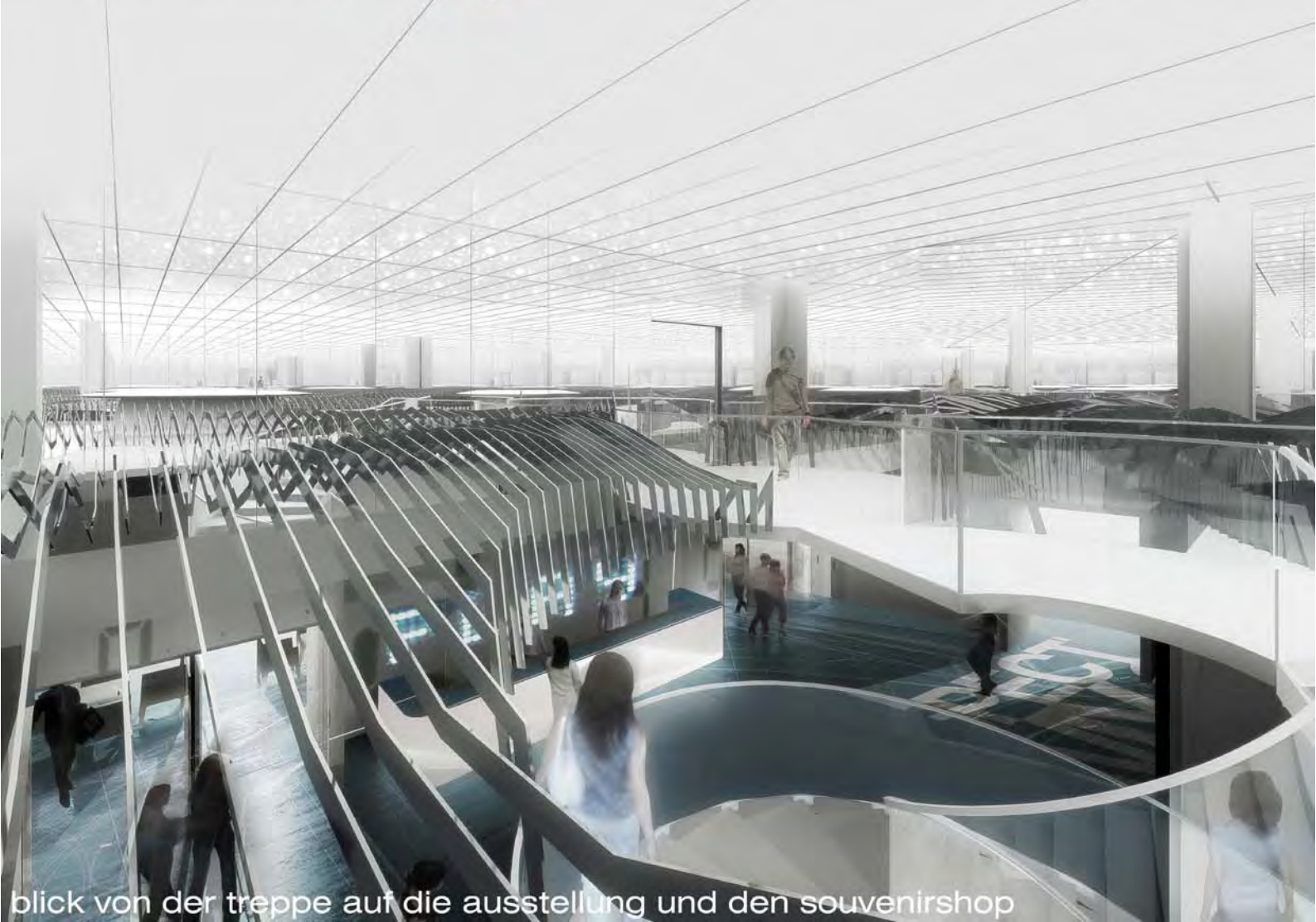
themenverknüpfung der ebenen



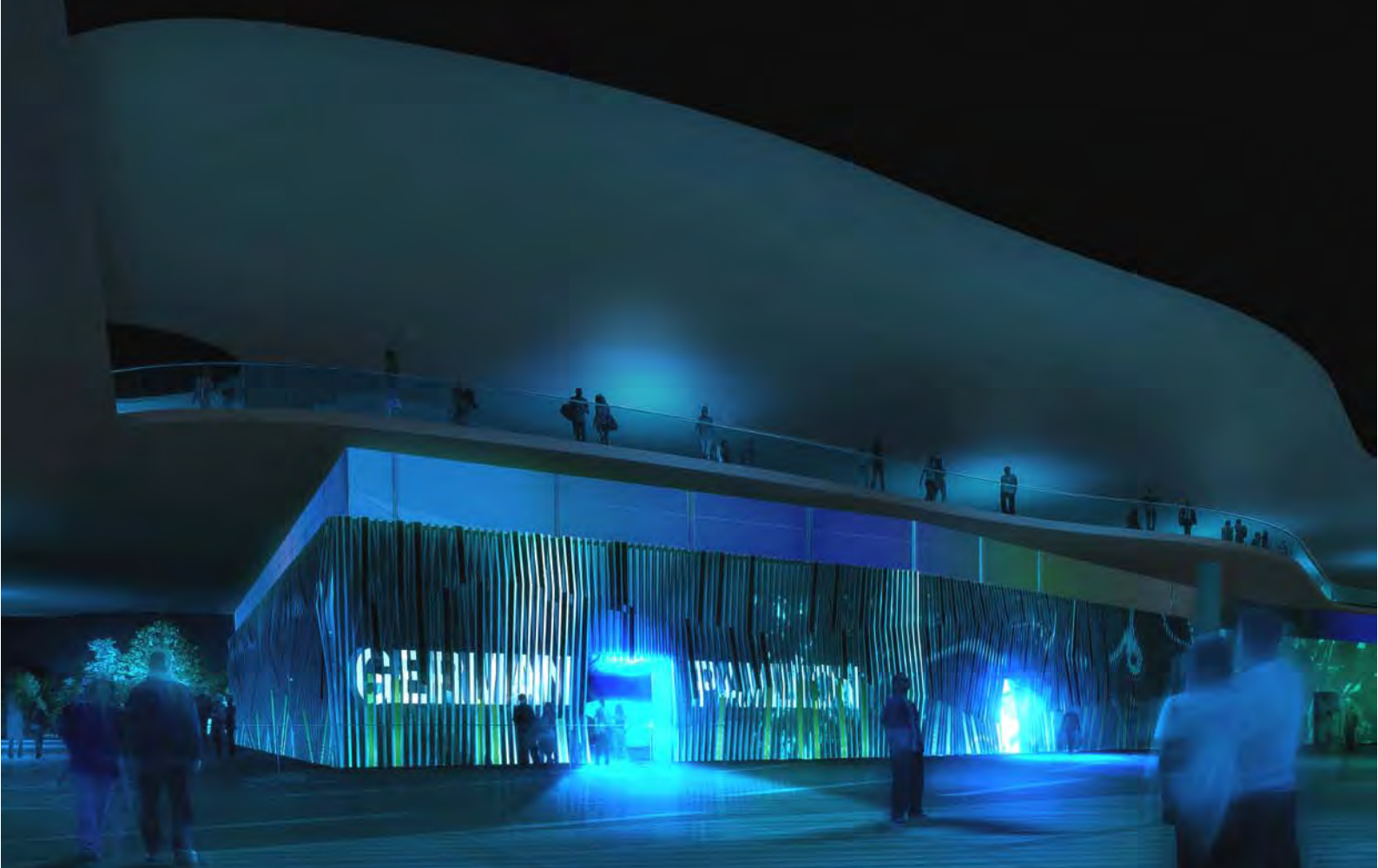
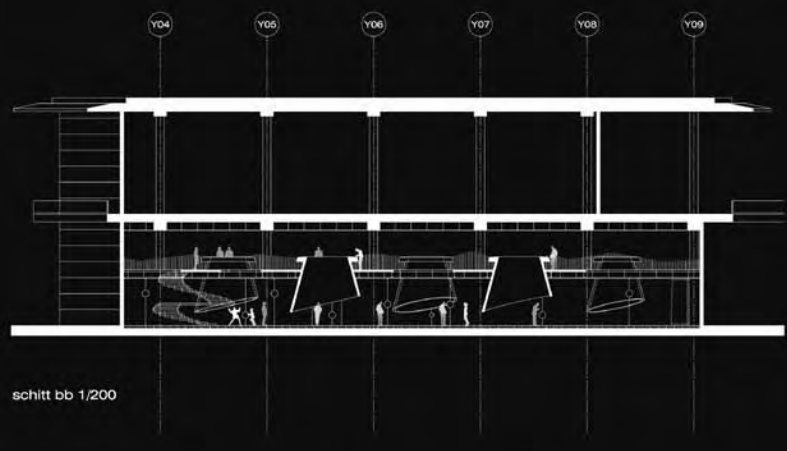
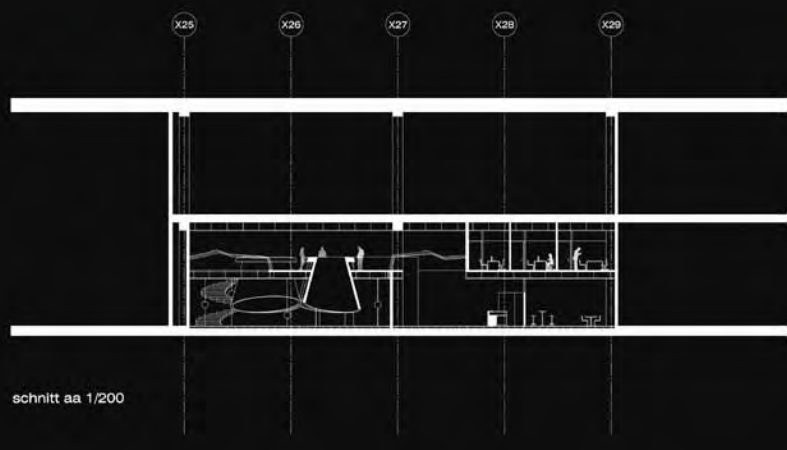
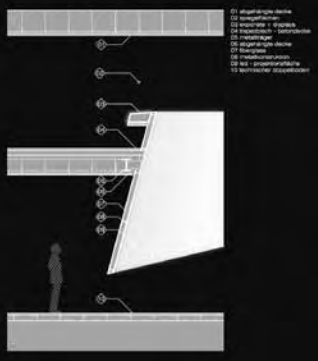
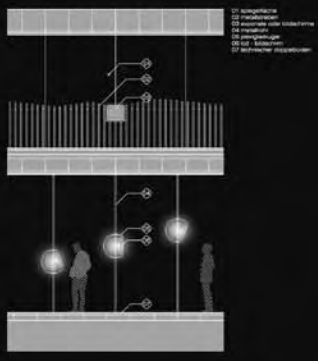
themenkreise



erschließung und szenographischer parcours



blick von der treppe auf die ausstellung und den souvenirshop



südfassade